

What's happening?

Feb. 10-Wed.

Filtration

Monthly Meeting:
7 TO 9 PM

**Stacy Furniture
in Grapevine**

*See page 3 for more
details*



Mar. 10—Wed.

Lighting: LEDs

Monthly Meeting:
7 TO 9 PM

*Stacy Furniture in
Grapevine*

Coming Soon

Spring Frag Swap

Location and
times to be de-
cided. Watch fu-
ture newsletters
for info.

June Meeting

Election of
Officers

IT'S HERE!!!

February 26th— 8 am to 6 pm

Fort Worth Botanic Gardens

3220 Botanic Garden Blvd.

Fort Worth, TX 76107

Tickets

\$25 — full event ticket including
speakers, vendor hall and raffle.

\$15 — vendor hall and raffle only,
no speaker access

\$8 — Jason's Deli Box Lunch:
delivered to the gardens that
morning

NOTE: Ticket prices go **UP** after
February 12th to \$35. Don't delay!!

To order, go to: [REGISTRATION](#)

For more *Next Wave* info, see:

Raffle Items — Page 8

Speakers Bios — Page 12

Vendors — Page 13

Also in this edition:

February Meeting Info — Page 3

Getting to Know You — Page 5

Sponsor's Corner — Page 6

Tank of the Month — Page 9

The President's Pen

Drew Richardson



Catch the Wave -- **Next Wave 2011**

Think of this conference as going to Reef Keeping College for a day. Four speakers are being flown in to instruct attendees on successful saltwater care. After each presentation, which will be in the form of slides, PowerPoint, or video, attendees can ask questions from the speakers about the subject being discussed. Don't miss your chance to gain knowledge that will last you a lifetime! Fourteen months ago, the Board of Directors set out on a mission to make future **Next Waves** bigger and better. The club wanted to get more attendees, a wider variety of vendors, and even more of the best speakers from around the U.S.

The genesis of this was a local coral show that started appearing in DFW called the Coral Farmers Market_{sm}. Started by Steve Tyree and Art Petit a few years ago in Southern California, the Coral Farmers Market_{sm} has grown year after year, and it appeared 2011 was the prime occasion to join both **Next Wave** and The Coral Farmers Market_{sm}. After numerous conversations with Mr. Tyree, the BOD was able to secure an agreement with the Coral Farmers Market, and combine it with **Next Wave 2011**. By doing so, the group would be assured that DFWMAS members would get the best of both worlds: The undisputed best captive-raised coral show in the country, and the best collection of speakers all in one place.

With over twelve months of planning, DFWMAS now has at its doorstep one of the best events of the year, and a unique opportunity to experience reef keeping at its finest. Currently, we have over a dozen vendors attending, and expect around 200 attendees. Coupled with thousands of dollars in raffle prizes and four excellent speakers, **Next Wave 2011** is a can't-miss event.

Hope to see each of you there ...

Drew



DFWMAS

Board of Directors

Drew Richardson
President

Marc Levenson
Vice President/Membership

Misty Johnson
Treasurer

Wes Parton
Secretary/Webmaster

Lindsey Angelone
Board Member

Jim Turkett
Newsletter Director

Jeff Dheere
Library

Dennis Freeman
Board Member

Board Member

February Meeting

TOPIC: FILTRATION: the value of sumps.

SPEAKER: Marc Levenson

There are many types and styles of sumps being used, and a lot of useful gear is hidden within. Marc will discuss all the different devices and why they are in use.

Why run carbon? What are NP pellets? How can top off be automated? Are refugiums still beneficial? Should the return pump be internal or external? What precautions need to be considered?

These questions and many others will be discussed and clarified.

IN ADDITION: Find out the latest news about **Next Wave**, our big one-day event that takes place Feb 26th. If you've not signed up yet to attend, it's not too late: <http://dfwmas.org/nextwave11>.

The meeting concludes after the big raffle. You've gotta be there to win, of course.

*We meet at **Stacy Furniture** in Grapevine, Tx on the second Wednesday of each month. We meet in the Common Room; enter the building and take the elevator to the third floor. Guests are welcome to attend to learn more about DFWMAS. The meeting features a specific topic, which often is provided by a speaker using PowerPoint. Meetings conclude after all the prizes have been raffled off.*

CATCH THE

Next

Wave



January Photo Contest: Starfish picture was won by **Joelq,**

Terrific Picture!

THE COMPLETE ILLUSTRATED
BREEDER'S GUIDE
 TO MARINE AQUARIUM FISHES



By MATTHEW L. WITTENRICH

MATING, SPAWNING & REARING METHODS FOR OVER 90 SPECIES

FOREWORD BY MARTIN A. MOE, JR.

Copyrighted Material

Once considered an impossible dream, the breeding of marine fish species by home aquarium hobbyists is becoming an enticing reality. As pressures mount to develop sustainable sources of aquacultured livestock for the aquarium hobby, reproduction mysteries of captive reef fishes are fast unraveling.

The All-New & Complete Breeder's Guide to Marine Aquarium Fishes is the first detailed guide to amateur marine fish breeding, and reveals the techniques for successfully spawning and rearing more than 90 species of marine fishes. This hands-on resource provides comprehensive coverage of the following species:

- * jawfish
- * assessors
- * cardinals
- * chromis
- * grammas
- * gobies
- * dottybacks
- * clownfishes
- * marine bettas
- * blennies
- * damsels
- * angelfishes

It also includes all the essential breeding steps for each family:

- * securing breeding stock
- * breeder conditioning
- * juvenile husbandry and growth
- * pair formation
- * spawning
- * larval feeding

Beautiful color photographs and diagrams help illustrate the species, equipment, and techniques described in the text. An essential for both the amateur and aspiring small-scale commercial breeder, *The All-New & Complete Breeder's Guide to Marine Aquarium Fishes* is expected to open the door to many thousands of new home breeders--a major step in the evolution of the marine aquarium hobby.

From the Back Cover

"A breakthrough book: everything you need to know to breed marine fishes successfully at home."

A landmark in the history of marine aquarium keeping, this long-awaited book opens the door to a new era in which home aquarists can succeed in spawning and raising beautiful coral reef fishes--clownfishes, dottybacks, cardinals, seahorses and more.

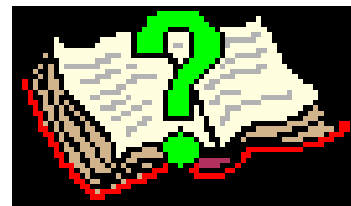
The Complete Illustrated Breeder's Guide to Marine Aquarium Fishes includes:

- * Step-by-Step Procedures for Beginners
- * How to Establish Broodstock Pairs
- * Breeding Room Set-up
- * How to Trigger Spawning
- * Feeding & Rearing Larvae
- * Detailed Family & Species Guides

Jeff Dheere, Librarian

Rules For Borrowing Items

1. One item per club member per month. Maximum of 2 per household at any one time.
2. There is no deposit required for checking out of items (subject to change).
3. You must provide your username, full name, address, phone #s and email address before you can borrow a book.
4. Items must be returned in the condition they were borrowed (or fines could be imposed).
5. You must be a full member in good standing to borrow books.
6. Contact the librarian (Jeff) to reserve an item—it will be available at the next meeting or arrangements can be made for checking out books between meetings.
7. You must return items before additional items can be checked out. In addition, items must be returned to the Librarian by the original person who borrowed them unless otherwise agreed upon (please do not pass books around).



Thinh Nguyen (pronounced Tin Win) is better known as Saltnewbie on the forums. Thinh is no newbie to saltwater though. He recently joined the DFWMAS staff as our moderator of the chat room.

Thinh began his aquarium addiction, as most of us did, keeping freshwater fish – including a koi pond in his Dad’s pond. This lasted for about twelve years. After he married and started on “the rest of his life”, his neighbors offered him their saltwater aquarium. At that point, he says he knew nothing about saltwater but he soon discovered DFWMAS. He blames his current 2.5 years addiction on this club. He attends almost every club function.

He was born and raised in Grand Prairie – where he currently lives (although he was raised in Houston and Port Arthur.) Thinh says he has worked at many jobs over the years. He has managed his family’s dry cleaners off and on for years. Then he spent some time working on cars doing custom stereo installations (from minor head unit installs to full blown all fiberglass trunks and doors). Currently, he manages his family’s Asian market.

His reef setup is contained in an Oceanic 72gal bowfront tank featuring mainly SPS and LPS but with a few Zoas also. His lighting consists of 2x 250w MH lumatek ballast Aquamaxx 14ks w/ 36” URI Super Actinic VHO. He also has a SWC Xtreme 120 cone skimmer, a calcium reactor with effluent chamber, Gen x Media and has just started using bio-pellets in a carbon reactor turned bio-pellet reactor.

Favorite movies: TopGun, Hackers, Pineapple Express, Wanted, and a big Anime fan

Favorite Actor: No favorites but he will watch any movie Robert DeNiro, Seth Rogen, Johnny Depp and Michael Douglas are starring in.

Favorite Actress: Angelina Jolie, Catherine Zeta-Jones, Sandra Bullock, Nicole Kidman and Kim Basinger.

Favorite Musical Group: Thinh likes a lot of different kinds of music from country to R&B to alternative. He grew up listening to 80s music from Gloria Esteffan to Wilson Phillips. He also loves a good piano tune when relaxing in his office.

Favorite Dessert and Treats: Whoppers. He also likes a sweet granola.

Pet Peeve: Narrow-mindedness and public gum poppers

Pets: Only his reef tank since his wife will not allow him to have any others.

Dream Vacation: Anywhere that he can sit and relax with a Jack and cola while being surrounded by friends and family.

Hobbies: Motorcycles, cars, and fish, of course. He enjoys modifying anything he can get his hands on.

Family: Wife, Krystal, and Son, Aiden. (They often accompany him to club meetings).

Who would you like to have as a guest for dinner? The best dinners are those spent with his friends and family. But if he had to pick a famous person, he wouldn’t mind sharing a meal with Andrew Zimmerman..

Do you know any famous people? Nope -- unless you consider Drew is a famous person



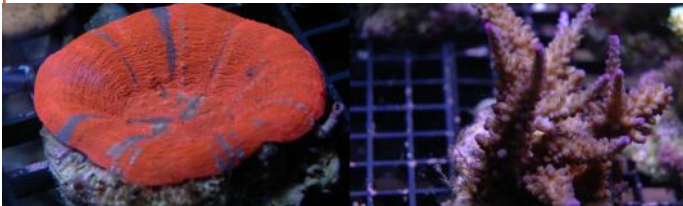
Fish2Morow

7355 N. Beach Street (suite 125) in Fort Worth (76137)

Fish2Morow opened on December 7th, 2007 and is located in north Fort Worth just south of Keller (at the intersection of N. Beach St. and Basswood, behind Chase bank). Store hours are: Tuesday-Friday (Noon-8 PM); Saturday (10 AM-8 PM); Sunday (Noon-6 PM); and they are closed on Mondays..

Robert Tondre says he has been in the saltwater fish business for the past three years. He describes it as 7 days a week lifestyle! The tanks at the store keep him so busy, he cannot maintain one at home at this time. Fish2Morow is approximately 1200 square feet packed with aquariums and supplies, and propagation/holding systems. Water storage is in the rear room of the store. The store has three stock tank systems consisting of 400-500 gallons per system. All other aquariums are independent. There is a total of about 3500 gallons of saltwater displays in the store.

Fish2Morow has numerous different types of displays: SPS, LPS, mixed reef in a bowfront, 560 gallon soft coral/fish, a custom 5 gallon nano mixed reef (has its own sump, wavemaker, ATO and LED stunner lights), FOWLR, non-photo, sea horses and cuttlefish. The store has two part time employees - both with several years of hobby experience.



Do you normally offer DFWMAS members a discount?

We offer \$5.00 off each bucket of salt purchased.

How long have you been keeping aquariums? (Fresh? Salt?)

Robert has maintained aquariums since 1990 (freshwater fish in the beginning) but his saltwater experience started in 1991. The first few years he learned how to raise several freshwater fish to help pay for his addiction. That grew boring quite fast, so he got into saltwater and experienced a new challenge! He says he has been successful in growing out several hundred different SPS corals (his favorite coral type-- since the early 2000s). Now, he maintains six displays ranging from 90 gallons on up to 560 gallons full of corals and fish of all types – all on display in the store. He now maintains only saltwater tanks.

What is the "specialty" of your store? Corals and fishes. Normally have several hundred corals/frags to choose from and over thirty 29 gallon stock tanks usually full of fish.

What unusual fish to do you? Their most unusual fish would have to be the 40" bamboo cat shark (housed in a 265 gallon aquarium). Snake eels, scorpion fish, borbonius anthias and cuttlefish are some of the other more unusual fish in the store.

Corals? A true Red Aussie acro, blue/green with purple rim efflo, multiple multi-color open brains, an array of colored gorgonians.

Inverts? PomPom crabs, horseshoe crabs and cuttlefish.

How big is your in-store show tank? The largest is 560 gallons (but we have six show tanks in the store).

What would you like the members of DFWMAS to know about Fish2morow? Fish2Morow is a full-line saltwater hobbyist store and is family-owned. Robert says he can special order fish and some corals -- just let Fish2Morow know what it is you are looking for and they will do their best to find it.



Inside the store during their recent "Big Sale"

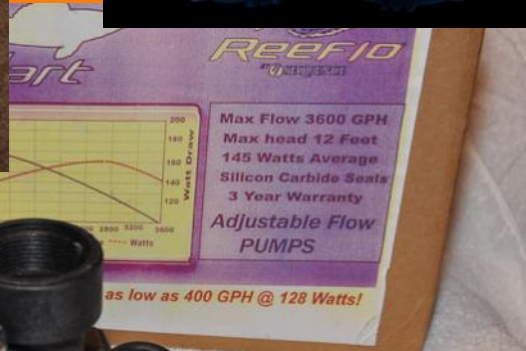




If you missed this excellent presentation, watch for the video in the **Members Only** section of the DFWMAS forums.

Thanks Jeff!





Marc Levenson



Marc Levenson

Some of the items in the raffle:

- 100gpd 5-stage RO/DI system - courtesy **Melev's Reef**
- Prism AC 18 LED fixture - courtesy **Unique LED Lighting**
- NextReef Reactor - courtesy **NextReef**
- Additives - courtesy **Seachem**
- 60w Cree LED fixture - courtesy **Exotic LED**
- Additives - courtesy **Brightwell Aquatics**
- ATI Bubble Master 300 - courtesy **Reef Geek**
- Typhoon RO/DI system, TDS meters, Gift Certificates - courtesy **Air Water & Ice**
- DJ Power Station - courtesy **DFWMAS**

More are being added daily.

Are you excited yet???

Raffle tickets will be priced at \$1 each, or 25 tickets for \$20.

Our Tank of the Month for February is maintained by **Jason Austin** (you probably know him better as **Acrodisiac**). He lives in Burkburnett, Texas – which is almost in Oklahoma (north of Wichita Falls – bet you didn't know there was anything north of Wichita Falls). He has been in the hobby since 2002 and mainly keeps SPS. Although he “tried to stay away from them due to their care” requirements, he became hooked. His favorite SPS is an ORA German Blue polyped Acropora. Although he lost his first colony (3 years old) due to a Kalk overdose, he recently purchased a three-inch mini-colony and can't wait for it to grow. Since his favorites corals are blue, he has concentrated on collecting several. His second favorite coral are chalices – due to their unbelievable color and patterns. Jason also says his favorite fish are Queen Angels (which have enjoyed his corals) and Ausi Harlequin Tusks (which seem to leave his corals alone).

System Profile

Main Tank: 120 gallons AGA with dual overflows.

Tank Dimensions: 24X24X48

Sump size: 40 gallons with 10 gallon frag section lit by Coralife 150w HQI

Filtration: Super Reef Octopus XP2000 External cone skimmer and Chaeto Algae

Lighting: Two 400W Single Ended 20K+ Ushio Metal halide bulbs, Luminbright large pendants, Coralvue dimmable ballasts. 28 3w Royal Blue LEDs from Steve's LEDs.

Circulation: Mag 12 Return pump, two Vortech MP40W ES, and one Vortech MP10W ES

Reactors: 2 Two Little Fishes reactors. One contains carbon and the other is Bulk Reef Supply (BRS) high

capacity GFO. Media is changed out monthly.

ATO: ATO from autotopoff.com. The dual float switch has been modified to use four float switches. ATO water is pumped via BRS top off pump from a 40 gallon reservoir that is filled with RODI water and saturated with calcium hydroxide (kalkwasser).

Other mechanical equipment: The tank is monitored and controlled by a Digital Aquatics Reef Keeper Elite. There are 8 controllable outlets, an internet module, and a SL1 for PH and temperature monitoring.

How did you get started?

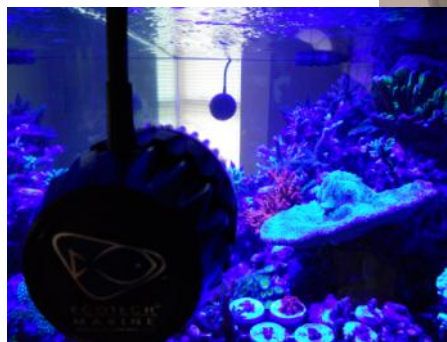
2002: It all started with the day he saw a friend's (fish only) 125 gallon tank. The very next week he had a 125 gallon (fish only) as well.

2004: Justin sold the 125 gallon (6 foot) fish only tank and set up a 75 gallon reef. He struggled with maintaining corals and an algae-free reef since he says he had little knowledge of reef chemistry and the importance of RODI.

2006: He set up a 65 gallon reef tank and moved from power compact lighting to 175W metal halide. With the use of RODI water, and adding Koralia pumps for flow, he began to see an improvement with coral growth and coloration.

2007: Justin got rid of the 65g reef and started a 60 gallon (cube) reef. He increased the lighting to 400W metal halide and upgraded to Vortech pumps. It's while having the 60 gallon cube that his knowledge and ability to care for SPS blossomed.

2010 (June): He packed up the reef and moved to Texas and setup his current SPS dominated 120 gallon reef.



Describe your filtration: The heavily stocked tank is kept clean with a Super Reef Octopus XP2000 external protein skimmer. He's had many skimmers in the past but he says the SRO line is by far the most impressive. The bubble blaster pump is low watt and 100% high performance. He keeps lots of Chaeto algae in the sump as well. Every month or so he gives clumps of Chaeto away to fellow reefers. His two reactors (Two Little Fishes brand) contain carbon and high capacity GFO purchased from BRS.



Describe your lighting: (Include lighting cycles, bulbs used, timing of lighting, etc). The RB LEDs come on a 12:00 midnight and shut off at 9:30am. The metal halides start to come on at 1:30 and 2:00 pm and shut off at 8:30 and 9:00 pm. The RB LEDs are driven at 700ma and have 60degree optics.

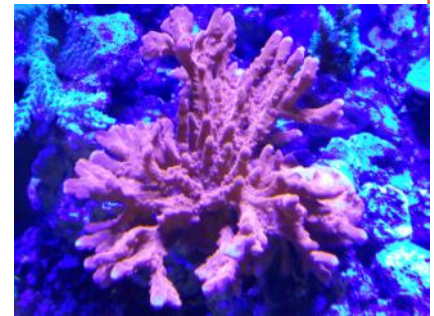
Do you have your own RO/DI unit? Five stage RODI from Bulk Reef Supply with RO booster pump set to 80psi.

What type of salt do you use? Instant Ocean Reef Crystals.

Water parameters:

Specific gravity: 1.026 PH: 8.25 average CA: 440ppm
ALK: 8-9 DKH Mg: 1400ppm Temp: 80.0-80.5

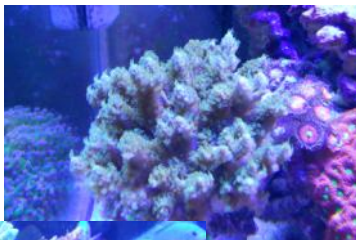
What do you dose, how much and how often? Supplements used? He does weekly 14 gallon water changes. The tank is topped off with saturated kalkwasser which helps keep Alkalinity, PH, and Calcium up. He uses Bulk Reef Supply products to dose Calcium, Alk, and Mag when needed. All the dosing is done manually with the BRS dispensing jugs. Typically, he doses 100-200ml of Alk, and 100ml of Mag.



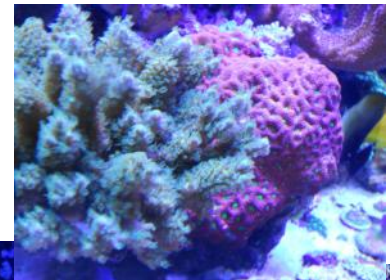
Describe your feeding (what, when, how often, process used to prepare the food): Fish are fed a variety of nori and spectrum pellet food. They are given a 2X8 piece of nori 5 days a week and fed pellets via Rena automatic fish feeder every 4 hours 7 days a week. The Rena feeder has a photo sensor and does not feed at night.

What corals do you maintain? Mixed reef being mostly SPS dominated. He does keep some LPS including frog spawn, ausi Duncan, chalices, pagoda cup coral, and acans. He keeps three clams in his sump. He does not have many soft corals other than some zoas/paly. Finally, he has a couple ricordias and mushrooms but their numbers are kept low, and are mostly used to hook up new members to DFWMAS.

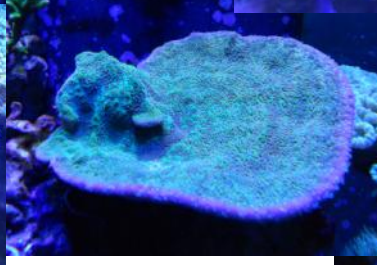
SPS: Lots of SPS—ties.



and many



lots of varie-



LPS: A good handful of chalice and other LPS. Some of the chalice in his collection are: BGM, FNF Psychedelic, Ktar Melting Pot, Miami Hurricane, Rainbow Delight, Tyree Area 51, Tyree Pink Watermelon, Knock-out, and Orangi.

Other Corals: He keeps several varieties of zoanthids and palys: Tubbs Blue zoas, Bam Bams, Watermelons, Lunar Eclipse Palys, Rainbow Palys, LOTR Palys, and others.



What fish do you maintain? The star of his tank is the Ausi Harlequin Tusk. He is the coolest fish ever! He's got blue teeth and he is a problem solver.

Others include: Powder Blue Tang, Juvi Orange Shoulder Tang, Juvi Scopus Tang, two Lyretail Anthias, orange spot goby, two Green Cromis, 6 line Wrasse, and a Green Corris Wrasse.

What invertebrates do you maintain? He can only keep snails since the wrasses are skilled crab and shrimp killers. He does have three clams in his sump in the frag section. The Tusk decided one day that he liked their taste, so they had to be moved. He does have a pom-pom crab that he sees every now and then -- mostly at night.

Future plans for tank(s): The only plans he has in the future is a tank move (which he is dreading that day) in the fall on 2011, and converting to 100% LED in the spring of 2012, that is if we're all still here.

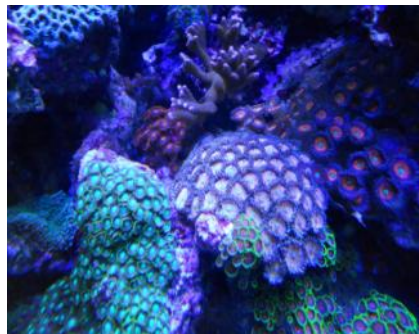
Any additional thoughts/comments and/or tricks and tips you'd like to share: Jason thanks DFWMAS crew for presenting this wonderful opportunity for him to show his reef. He describes it as a work in progress; but since he plans to in this hobby for many years to come, he looks forward to watching the technology evolve and our job as reef keepers get easier (hopefully).

Overall Advice:

His advice to others in the hobby, here are the key steps to his success.

- 1) Do not skimp on lighting.
- 2) Do your waters changes (10% weekly) and do it with a good "reef" salt.
- 3) Buy a refractor meter -- put the swing arm under a tire and drive over it.
- 4) Test your own water with good test kits. If you're feeling lazy and don't feel like doing all the tests, at least test alkalinity.
- 5) Flow -- LOTS of it.
- 6) Have a decent skimmer. Buy the best you can afford.

Things may work for you in different ways but the bottomline is: have fun and keep the hobby alive!



SPEAKERS

J. Charles Delbeek, S.Mc. - *Trials and Tribulations of a 200,000 gallon Reef Tank*

Senior Aquatic Biologist - California Academy of Sciences' Steinhart Aquarium

Charles holds three degrees from the University of Toronto; an Honors Bachelor degree in Biology, a Masters in Zoology and a Bachelors in Education, which gives him not only a strong basis in marine science, but also in education. This multi-disciplined background allows for a unique viewpoint when it comes to creating not only scientifically accurate living aquatic exhibits but also educational materials for exhibit graphic and interactive components.

His professional interests include the ecology and captive husbandry of marine and freshwater fishes, live corals, mangroves, seagrasses, freshwater aquatic plants and cephalopods. Currently a senior aquatic biologist at the [California Academy of Sciences' Steinhart Aquarium](#), Charles was previously employed at the [Waikiki Aquarium](#). In his capacity at the Waikiki Aquarium, Charles has been part of the exhibit design team and has contributed to several award winning exhibits and conservation programs ([Bean Award 2003](#), [M.A.C.E. Award 2003](#), [M.A.C.E. Award 1999](#)) including live coral and giant clam exhibits, freshwater planted aquaria, cephalopod exhibits, marine fish exhibits as well as holding and research systems for corals and clams. With over 14 years experience in the public aquarium field, 8 years of teaching experience and 35 years of marine aquarium experience, Charles has developed a well-deserved world-wide reputation for excellence and accuracy in award winning exhibit design and implementation.

James Fatherree - *Reducing the Electrical Consumption of Your Reef Aquarium*

Author - Giant Clams in the Sea and the Aquarium

After being a marine aquarium hobbyist and business owner for several years, James wrote a "do it yourself" aquarium book. This first step eventually led to 5 more aquarium books, the latest of which is [Giant Clams in the Sea and the Aquarium](#). He also picked up a monthly column in [Tropical Fish Hobbyist](#) magazine, which he has been writing since 1999, as well as many articles for [Advanced Aquarist Online Magazine](#), [Aquarium Fish Magazine](#), [Conscientious Aquarist](#), [C: The Journal of Marine Science, Travel, and Adventure](#), [Freshwater and Marine Aquarium](#), [Reefkeeping](#) magazine, [Reef Life](#), [Practical Fishkeeping](#) (UK), [Ultramarine](#), (UK), [Les Lettres Recifales](#) (France), [Aquarium Magazine](#) (France), [Datz](#)(Germany), [Coral Science](#) (Netherlands), [Ons Zeeaquarium](#) (Netherlands), and [Submerge](#)(South Africa), too.

Gerald Heslinga - *Sustainable Pacific Island Mariculture*

Founder/Owner of Indo-Pacific Sea Farms

Indo-Pacific Sea Farms is an aquaculture research and development company located at the Hawaii Ocean Science and Technology (HOST) Park in Kailua-Kona, Hawaii. Its mission is to develop and commercialize innovative technologies for the sustainable production of coral reef fish, plants and invertebrates. The dedicated professionals at IPSF have more than 30 years experience in tropical marine science research and have directed continuous commercial-scale production of marine life products for domestic and international markets for over 20 years. IPSF personnel have worked professionally throughout the United States and in 16 other nations in the Asia-Pacific region. They bring a solid academic base, decades of hands-on field work and a "real-world" perspective to issues involving sustainable use of tropical marine life resources. At Indo-Pacific Sea Farms, innovation is their guiding philosophy!

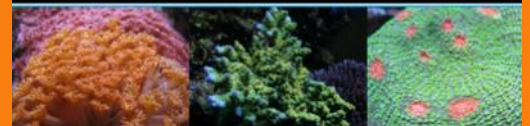
Matt Pedersen - *Passion Incarnate & the Ultimate DIY Project - Marine Fishrooms*

*Matt currently resides in Duluth, MN, and has been a marine aquarist for 23 years, and an aquarist for 28 years. His current area of interest is marine fish breeding and has currently spawned 17 species of marine fish, successfully raising six of them including one worldwide first (the Harlequin Filefish, *Oxymonacanthus longirostris*). Matt is credited with starting MOFIB (Marine Ornamental Fish & Invertebrate Breeder's Association) and writing for multiple publications including Coral, Koralle, Practical Fishkeeping and Reef Hobbyist Magazine. He was awarded "Aquarist of the Year" honors by both IMAC West and MASNA in 2009 in recognition of his accomplishments and contributions to the marine aquarium hobby.*

Vendors



TM



AS WELL AS:

- Zoos Aquarium Services
- World Wide Corals
- 3rd Coast Corals
- Village Corals
- Lone Star Aquaculture

MORE BEING ADDED DAILY!!!